

Welcome to the first edition of "Neu News". You may be wondering what this new concept is all about. Here at Neu Way Farms, we realize that communication is very important, and we are making an intentional effort to have better communication with our most valued partner, our landowners.

In this issue, you will find a brief history of this 4th generation farm, a look at our team, a landowner spotlight and an introduction to our foreign workers. Our goal is to give you a glimpse into who we are and update you on what is going on at the farm.

In each semiannual issue of the newsletter, we will shine a spotlight on one of our landowners in hopes of getting to know some history about the land and the owners themselves. We appreciate the blood, sweat, and tears the owners and their families have put into the land and are honored to be a part of your family's legacy.



Winter 2018

Neu Way Farms will be faithful stewards of the land, embracing innovation while raising up each generation to farm with integrity and reliability.



## History

The history of the Neu farm dates back to 1889. After changing ownership several times, Jacob Weber, Tony and Daniel's great-great-grandfather, from Lesterville, SD, purchased the farm in 1895. In 1916 his daughter, Louisa, and her husband Andreas Neu, purchased the 500-acre farm. Tony and Daniel's grandfather, Herbert, took



**Neu family farm in early 1950's**

over the farm in 1943, expanding it to a diverse small grain and livestock farm of 2000 acres by the late 1960s. At this time, Jarrold, began farming with his dad until Herbert retired in the mid-1980s.

Tony entered the operation in 1988 and, in 1992, Jarrold, Tony and Daniel formed the Neu

Way Farms partnership. They continued the partnership after Jarrold passed away in 1997. In 2000, Tony and Daniel began a cooperative partnership with Kurt Groszhans. They exited from the livestock side of the operation and began to expand and concentrate solely on grain farming.

Kurt's share of the operation was purchased in 2017 in order for him to focus on another business venture. Currently, Tony's son, Jakob, attends NDSU in Fargo, ND where he is pursuing a degree in Crop & Weed Science in hopes of returning to the family farm.



**Jarrold and Herbert**

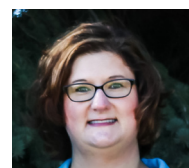


**Neu family today:** (Left) Daniel and Jennifer Neu and their children Dillon and Andreas, (Middle) Larry and Karen Himmerich, (Right) Anthony and Lisa Neu and their children Kendra and Jakob

## The Team



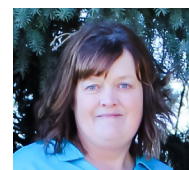
**Anthony Neu**  
General Manager



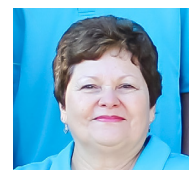
**Lisa Neu**  
Office Manager



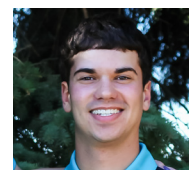
**Daniel Neu**  
Operations Manager



**Jennifer Neu**  
Co-Owner



**Karen Himmerich**  
Office Staff



**Jakob Neu**  
Equipment Operator



**JC Bosman**  
Equipment Operator



**Bogdan Tokaichuk**  
Equipment Operator

# Landowner Spotlight

In this issue's Landowner Spotlight, we are featuring Wayne Fischer of Aberdeen, SD. Wayne was born and raised on his family farm just 10 miles southwest of Ashley. His parents, Carl and Ida Fischer, had been married 15 years before he was born in 1937. He would be their only child.

The family farm had been homesteaded by his grandfather, Christian C. Fischer. The land consisted of two farms that were about a block apart. Wayne grew up on the farm to the North while his grandfather lived on the farm to the South. While growing up, he had many fond memories with his grandfather. "We were buds," said Wayne, "We did everything together."

Wayne drove an A-Farmall tractor to farm school. His father built a tractor cab for during the cold months. Often times Wayne and his friends would race their tractors home after school. Wayne attended a one room farm school until the sixth grade, his last teacher being Ruth Jenner. His family then moved to Ashley where he continued his schooling. He graduated in 1955 from Ashley High School.

He then attended college in Ellendale, ND. During this time he met Donna Pool, who later became his wife. While in his third year of college, they married. They just celebrated their 60th Anniversary on December 23rd. He graduated college with a teaching degree in Industrial Arts. His first job was in Finley, ND where he taught for four years. He and his wife moved to Aberdeen, SD in 1963, where he started Fischer Construction and built homes for three years. He was then hired at Northern State University as the director of Facilities Management. He worked there for 40 years until he retired in 2006.

Wayne and Donna have two grown children, Brent and Peggy. Today, he enjoys helping with church maintenance projects and playing pool daily at the senior center. We would like to thank Wayne for partnering with Neu Way Farms since 2001.



**Wayne and Donna**

## Notes

### Welcome

Genevieve Anna Jenner! Born March 19, 2017. Proud parents are Taylor and Becky Jenner.

### In Loving Memory

Wilbert "Bill" Steinwand (September 21, 1926 - March 15, 2017)

Ruth E. Jenner (December 22, 1927- October 21, 2017)

We have rented land from both Bill and Ruth since 2001.

## Workers

Bogdan Tokaichuk and JC Bosman are workers employed on the farm. 2017 marked the sixth season Bogdan has worked with us. He is from Vinnitsa, Ukraine. He is an excellent mechanic and equipment operator.



**Bogdan Tokaichuk**

JC is from Magogong, South Africa and this was his first year with Neu Way Farms. He and his wife have three grown children. While JC is in South Africa, he works on a farm as a forman. He is a skilled welder and equipment operator.

Both Bogdan and JC enjoyed a trip to Medora this past summer. They were impressed by the musical and the change in the landscape.

While they were here, we enjoyed learning about their diverse cultures. We look forward to seeing them again in the spring of 2018.



**JC Bosman**